

Article number: 1211185

Description: Wooden Work Top – Tool Trolley

EAN: 8714247084557



Colad Wooden Work Top – Tool Trolley

Transform your Tool Trolley into a functional, ergonomic, and sustainable workstation with this premium wooden worktop.

Looking for a sturdy, professional, and eco-friendly upgrade for your Tool Trolley (Art.no. 1211010)? This Wooden Work Top offers the perfect solution! Crafted from high-quality rubberwood, this worktop provides a smooth, durable, and stable surface for all your sanding and preparation tasks, while also being an environmentally responsible choice. Designed for professionals who value efficiency, durability, and responsible material choices!

Why rubberwood?

It's a sustainable hardwood, sourced from plantation-grown rubber trees at the end of their latex-producing cycle. Instead of being discarded, the wood is repurposed, reducing waste and promoting responsible forestry. The natural rubberwood finish adds a premium touch while ensuring durability against daily workshop use.

Upgrade now and work smarter, with sustainability in mind!

Features:

- Custom-fit for seamless integration with your Colad Tool Trolley (Art.no. 1211010)
- Sustainable rubberwood, a durable and eco-friendly choice
- Sturdy and durable design

Benefits:

- Quick and easy installation for an instant upgrade
- Smooth and spacious work surface for maximum efficiency

Unlock Ultimate Efficiency with E²M

This product is part of Colad's revolutionary E²M line, the modular system designed to optimize any workspace with ease. With its flexible hook-and-grid system, you can create your perfect setup in seconds, no tools needed. Discover more at: www.colade2m.com.

Packaging information

Packaging: Per piece in a box

Outer packaging: 5 pcs per box

Technical information

- Material: Rubberwood

- Color: Natural wood color
- Coating: Natural
- Dimensions: 717 x 453 x 20 mm
- Weight: NW: 4,4kg GW: 4,6kg

Frequently Asked Questions

> Is the Wooden Work Top compatible with all trolleys?

No, this worktop is specifically designed to fit the Colad Tool trolley (Art. no. 1211010). It ensures a perfect fit for seamless integration and optimal stability.

> What makes rubberwood a sustainable choice?

Rubberwood is sourced from plantation-grown rubber trees that have reached the end of their latex-producing cycle. Instead of being discarded, the wood is repurposed, making it a durable and environmentally friendly material.

> How durable is the rubberwood surface?

Rubberwood is a hard and stable material, resistant to warping and wear. It provides a smooth, strong, and long-lasting surface, ideal for professional workshop use.

> Is the Wooden Work Top easy to install?

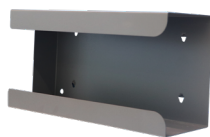
Yes! The worktop is designed for quick and hassle-free installation on the Tool trolley (Art. no. 1211010). Simply place it on top and secure it for a stable and reliable work surface.

Related products



1211010

Tool Trolley



1247060

Gloves Dispenser



1247030

Sanding Disc Dispenser

Disclaimer

It is the responsibility of the user to read, understand and apply the information contained in this data sheet. Products are for professional use only. Necessary protective equipment and clothing should be worn. Repairs should always be done in accordance with OEM guidelines and regulations. All information is for the user's consideration, investigation and verification. The specific use, application and conditions of use are beyond the control of EMM International BV. It is the responsibility of the user to determine the suitability of the product for the user's specific application.